

# Together

we did so much!

Thank you to our incredible donors and volunteers for transforming lives in 2022.



On average

**713** people benefited each week from our Food Market.  
*This is a 9% increase from last year!*

On our busiest week we saw **822** people.

We received and distributed



**157,595 lbs**  
of non-perishable food



**145,751 lbs**  
of perishable food

## KERRSTREET

- market -

Our market is open

**8** times per week

and is staffed by **32** volunteers



**40** children attend our Kids' Clubs programs weekly

**13** Youth Leaders in Training participate in the Kids' Clubs weekly

On average **23** youth participate in KSM's weekly programming

**35-40** students from the Gary Allan High School use KSM facilities daily



NEIGHBOUR CARE NETWORK

**53** families received care and customized support from the Neighbour Care Network

christians against poverty



A total of **\$100,500** of debt was resolved through our CAP Debt Centre

**24** families and approx. **\$800,000** of debt is in process towards elimination

# OVERWHELMED BY GRACE

Ten years ago I started my journey at Kerr Street Mission, and little did I know what was in store for me. Looking back I am amazed and grateful for the generosity and compassion I have witnessed. Time and time again volunteers and donors have demonstrated incredible acts of kindness and compassion. We have done more than we thought we could because of your generosity. I hope as you read on, you are blessed, knowing together we responded to the needs of many people in ways that make a difference for today and the future.

There has been a lot of uncertainty in the last few years. We tried to act with confidence, faith, and caution as we planned for the next season at KSM. As a staff, we continue to challenge each other to maintain dialogue with our clients and make adjustments to ensure we provide the best care we can – the same care we would want for our families. Today I can say that our programs and services are better than they have ever been, and that is because of your faithful support.

As we enter 2023, there is still great uncertainty. We could cut back services, put plans on hold, or move forward with confidence and faith. As I look at the situation and struggles of so many of our clients, I can't help but think we need to sustain the care we currently provide. We need to explore more collaborations and partnerships so we can provide the additional help and support that our clients need, all the while continuing to find improvements (efficiency and effectiveness).

Yes, 2023 will present challenges, but it will also offer opportunities for further improvement and greater impact. In fact, we have already been blessed with two unexpected gifts that will help us take some crucial steps forward!

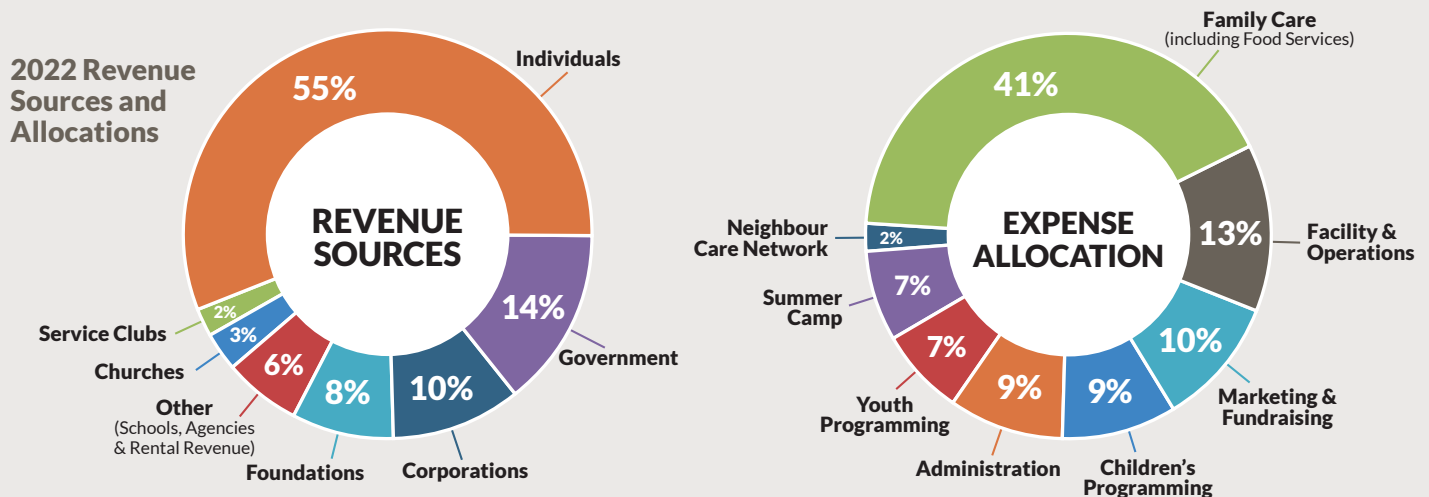
Thank you again for your incredible and faithful support.

Gary O'Neill  
Executive Director  
gary@kerrstreet.com | 905-845-7485 ext 202

*Be sure to look at the invitation for Live on Kerr. Please mark it in your calendar and use the magnet included to post it as a reminder. It will be a great evening to celebrate together and share inspirational stories and exciting developments as we look ahead to the future!*

## FINANCIAL ACCOUNTABILITY

We are excited to report that revenue in 2022 was better than expected. When we were planning our expense budget in 2021, financial experts were predicting that donations to charities would drop in 2022. As a result, we planned our spending carefully to ensure that we could both sustain programming and respond to potential increased needs. Over the year, the decline in revenue was slightly less than expected, and the increased registrations for food programs and costs were significantly more than expected. Amazingly, donations and gifts in kind in November and December exceeded 2021 giving, helping us cover all 2022 expenses and supporting some initiatives planned for 2023.



### NOTES

- The value of food and other goods donated and distributed to clients is NOT captured as a revenue or included as an expense.
- The percentages are based on unaudited statements. Audited Statements will be completed in April and are available upon request.